



**CHRIST**  
COLLEGE (AUTONOMOUS)  
IRINJALAKUDA, KERALA

## **ALUMNI FEEDBACK ON CURRICULAM**

**FEEDBACK ON CURRICULAM FROM ALUMNI**  
**REPORT 2022-23**



## **METHODOLOGY:**

The institution conducted a comprehensive feedback survey to gather insights from alumni regarding the quality of the curriculum and courses completed during the academic year 2022-23. The purpose was to understand alumni opinions, identify areas for improvement, and incorporate valuable suggestions into the curriculum. The institution is committed to taking necessary actions based on this feedback to enhance the overall educational experience.

## **Survey Respondents:**

The survey received responses from a total of 212 alumni who have completed various courses during the academic year 2022-23.

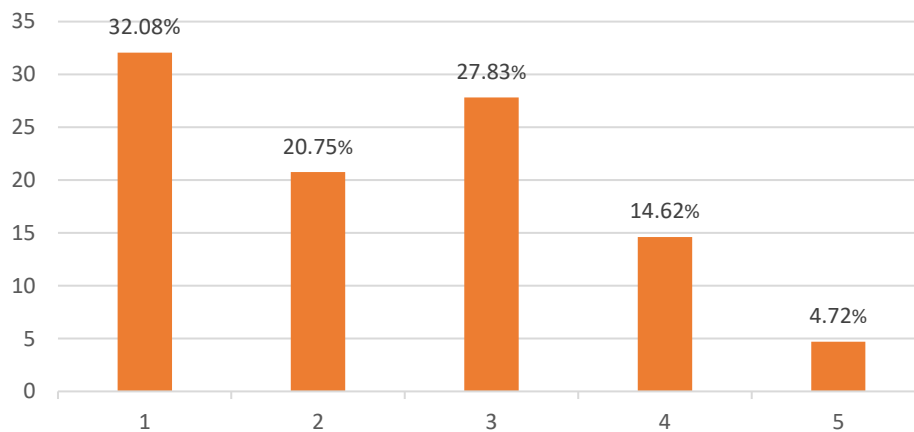
## **Data Collection Method:**

Feedback was collected using a five-point Likert scale, where respondents could express their opinions on a scale from 1 to 5. A score of 1 represented a "strongly agree" opinion, while a score of 5 indicated a "strongly disagree" opinion.

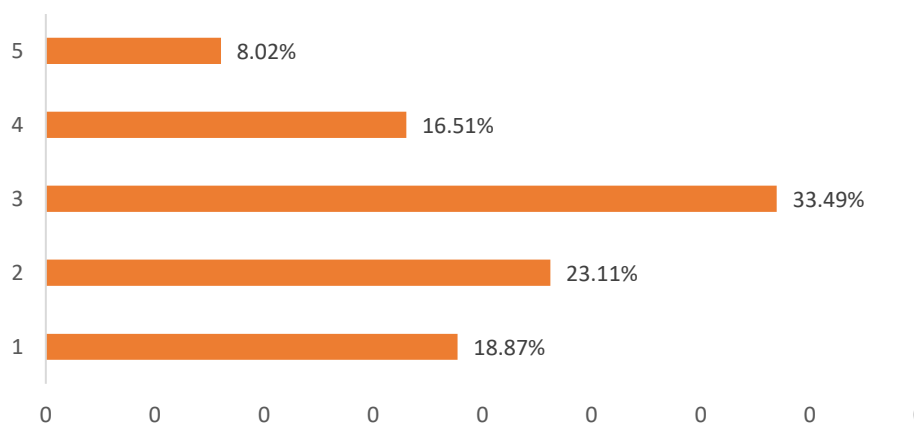


**CHRIST**  
COLLEGE (AUTONOMOUS)  
IRINJALAKUDA, KERALA

**Courses prescribed are relevant and are suitable to further career/ higher studies.**



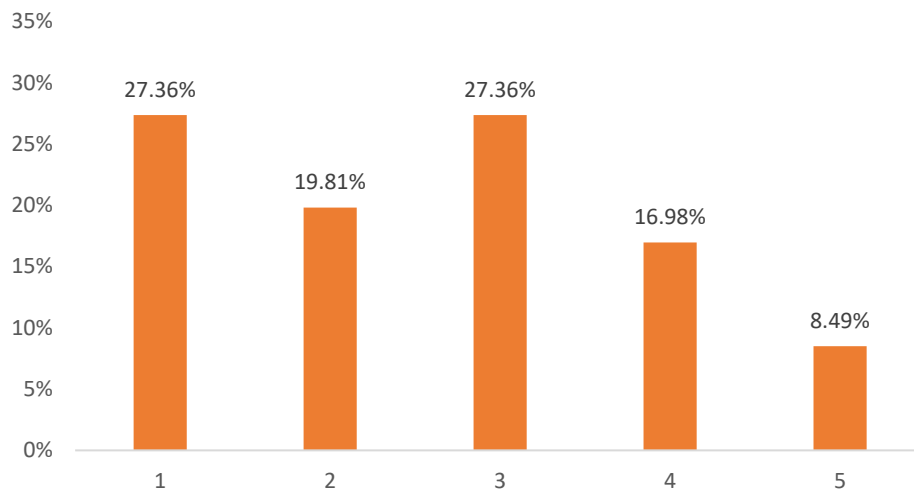
**Course content has the latest developments in the subject**



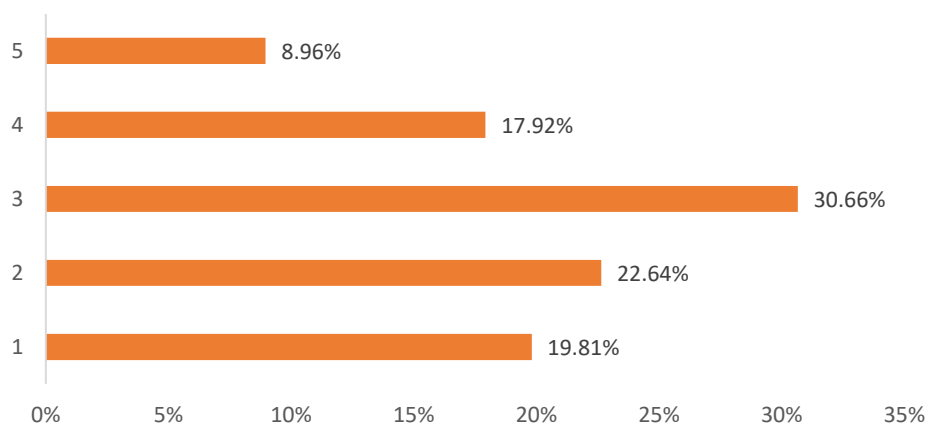


**CHRIST**  
COLLEGE (AUTONOMOUS)  
IRINJALAKUDA, KERALA

**Complementary and open Courses help to develop a multidisciplinary perspective.**



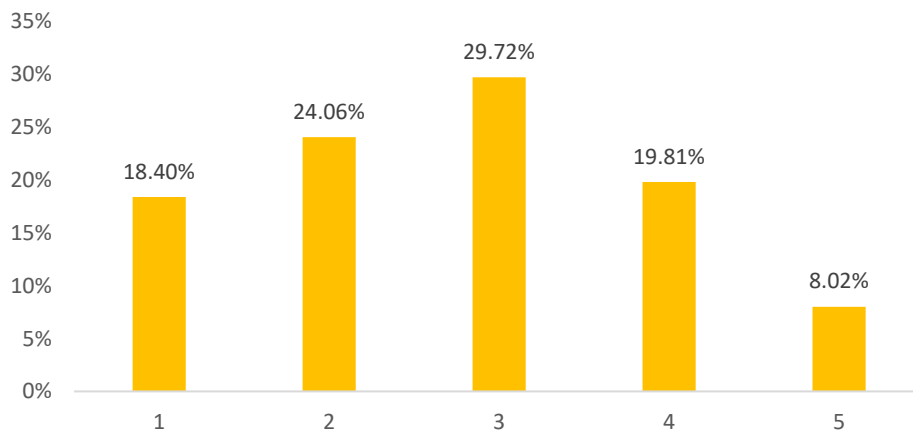
**The syllabus helps to achieve the expected learning outcomes**



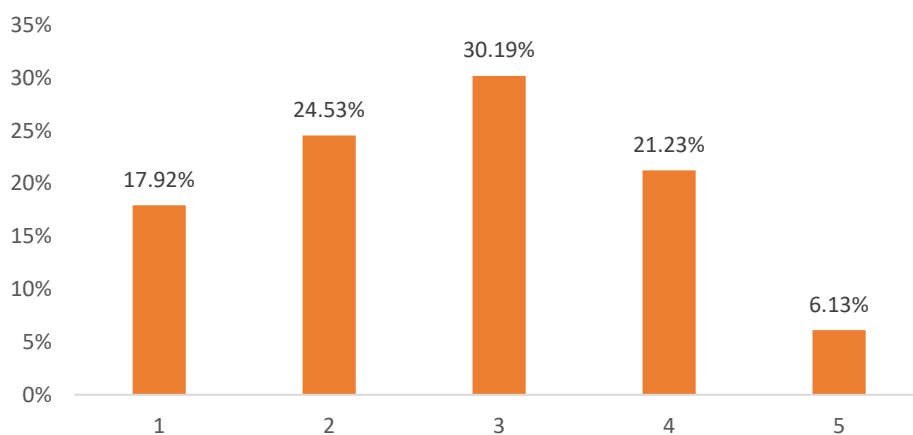


**CHRIST**  
COLLEGE (AUTONOMOUS)  
IRINJALAKUDA, KERALA

**The syllabus has course components addressing local, national and global issues.**



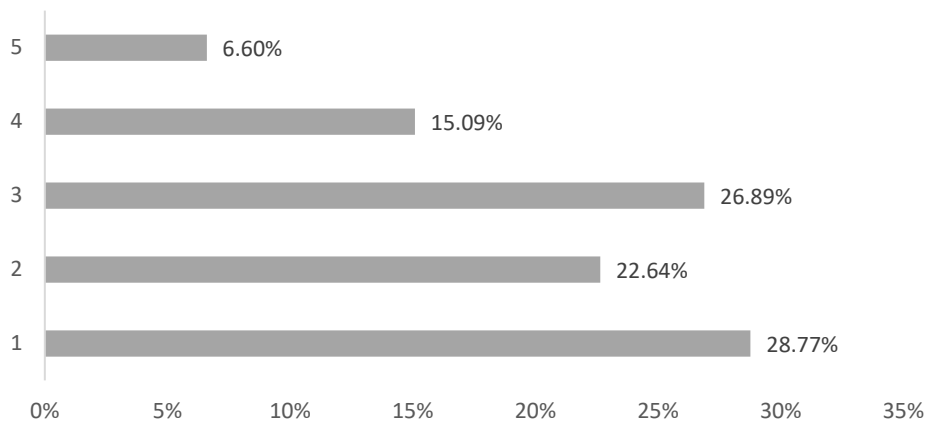
**The syllabus caters to the intellectual demands of diverse learners.**



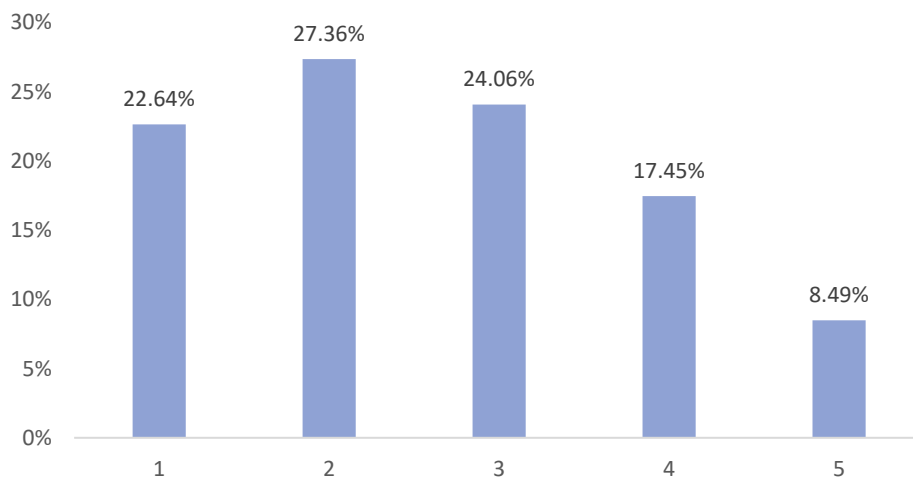


**CHRIST**  
COLLEGE (AUTONOMOUS)  
IRINJALAKUDA, KERALA

**The Certificate and other Add on Courses are relevant and impart necessary marketable skills.**



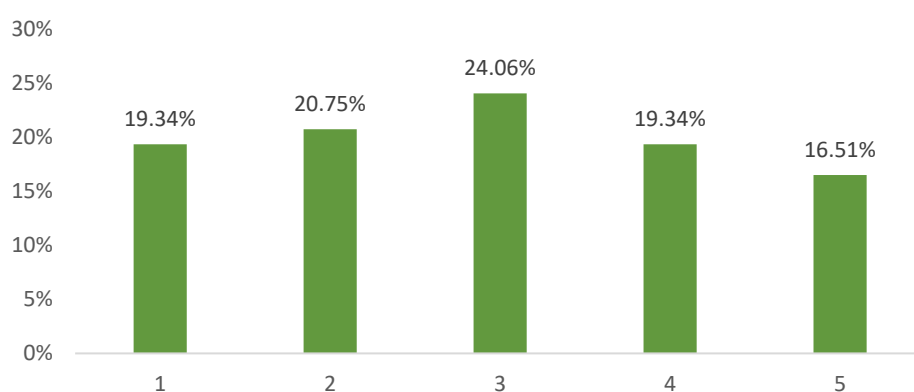
**References given are adequate and available.**





**CHRIST**  
COLLEGE (AUTONOMOUS)  
IRINJALAKUDA, KERALA

The syllabus provides provision for experiential learning (Field work, Internship, Industrial exposure etc.)



### **Suggestions from Alumni**

- Alumni recommend an enhancement in the quality and frequency of industrial visits. These visits should be curated to provide students with practical insights into real-world applications of their academic knowledge.
- It is suggested that the institution maintains and improves the quality of classroom teaching. Alumni emphasize the importance of engaging and effective teaching methods to ensure a comprehensive understanding of the subjects.
- Alumni advocate for giving more importance to extracurricular activities as part of the learning experience.
- Alumni propose a more field-oriented syllabus that integrates practical skills with theoretical knowledge.



- It is recommended to introduce additional practical learning options within the curriculum. This could involve hands-on projects, case studies, and interactive sessions that allow students to develop practical skills alongside theoretical understanding.
- Alumni suggest the provision of internship options to expose students to professional environments and hands-on experiences. Internships can provide valuable insights into industry practices and help students apply classroom concepts in real-world settings.
- To support academic growth, alumni propose making a broader range of reference materials available. This includes textbooks, online resources, and research materials that can aid students in exploring and deepening their understanding of the subjects.

The institution acknowledges the valuable feedback provided by alumni and is committed to addressing the identified areas for improvement. A comprehensive action plan will be developed to incorporate suggested revisions into the curriculum, with a focus on enhancing practical learning experiences and aligning the courses with industry needs. By considering and implementing these suggestions, the institution can create a more dynamic and effective learning environment, better preparing students for the challenges of their future careers.